



Situated in a quiet cul-de-sac within walking distance to the town centre is this well presented three bedroom, detached family home with plenty of off street parking. Located in the highly desirable Crouch Oak Estate.

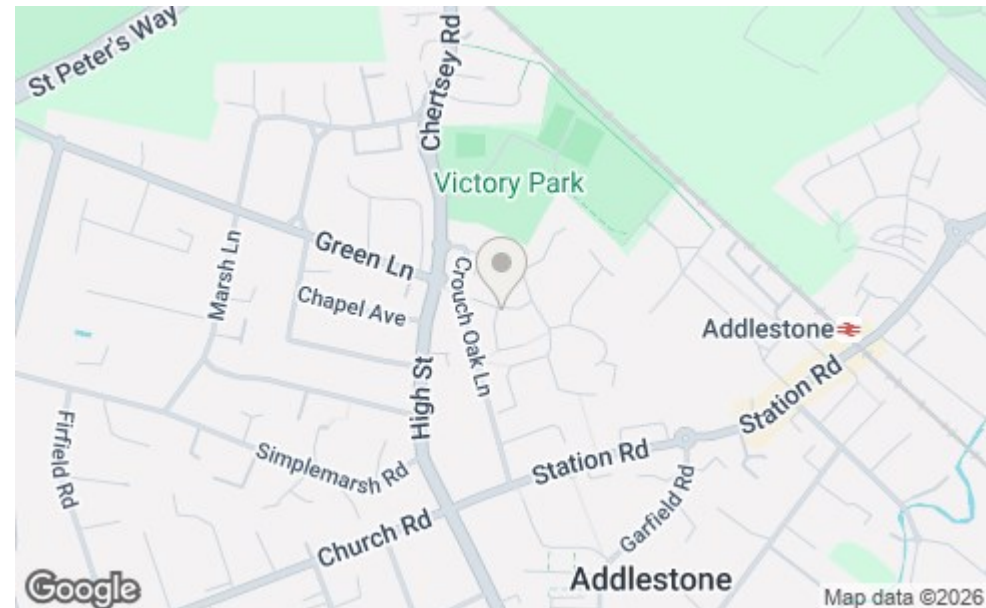
The ground floor offers a bright and spacious living room with a bay window to the front of the property, leading onto a kitchen diner that overlooks the newly laid lawn and a large south facing garden. There is also a modern cloakroom.

Upstairs has three good sized bedrooms; two with large wardrobes and a lovely family bathroom with a newly fitted shower unit over the bath. This property also has gas central heating, double glazed windows and a large shed in the garden. The garage space has also been utilised into studio room/playroom and can be accessed via a door at the rear.

Offered to the market unfurnished and available from the beginning of June.

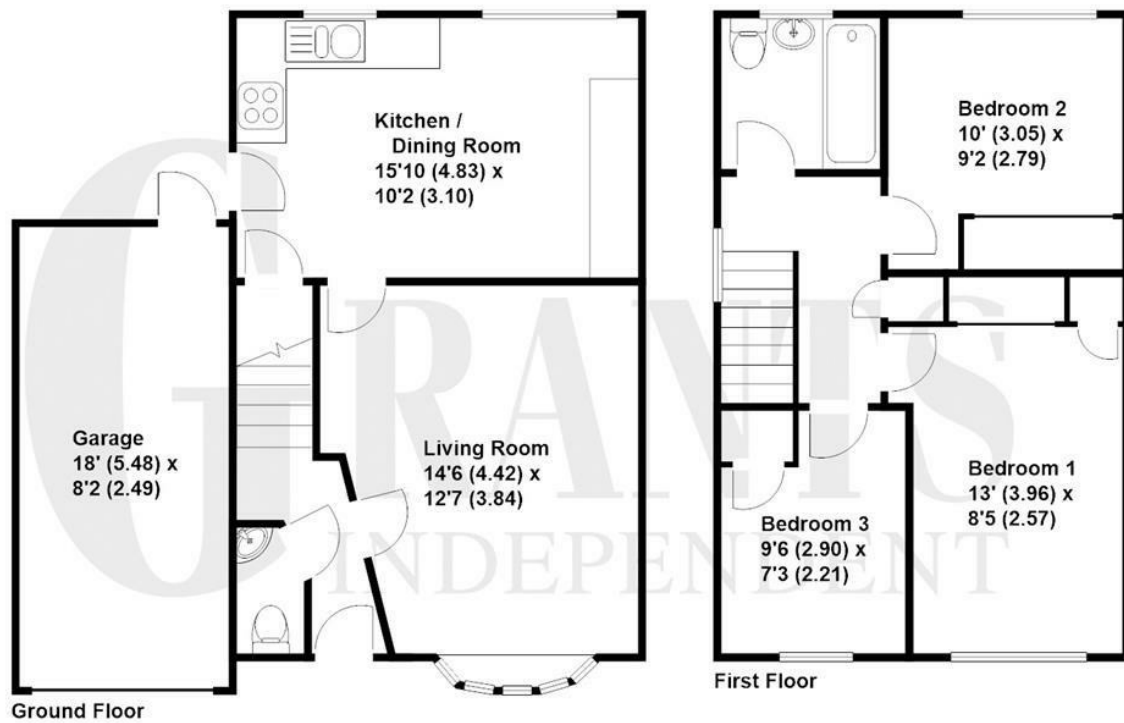
Viewing Strictly by Appointment:

60 Church Street
Weybridge
Surrey
KT13 8DL
T: 01932 841020
F: 01932 843242



EPC Rating 65 D

Disclaimer: Grants Independent Estate Agents cannot verify that the equipment, apparatus, fittings or services within this property are in working order, as they have not tested the relevant items. The buyer is advised to obtain verification from the solicitor dealing with the conveyancing or survey.



Grants Independent has prepared these sales particulars for general guidance purposes only. They do not form or constitute any part of an offer or contract. The services, systems and appliances listed in these details have not been tested by us, and no guarantee is given to their operational ability or efficiency. Lease details, service charges and ground rent are given as a guide and should be checked by your solicitor prior to exchange of contracts. These plans are not drawn to scale and are for representational purposes only. Created by www.visionwithin.co.uk





**Viewing Strictly by
Appointment:**

60 Church Street
Weybridge

Surrey

KT13 8DL

T: 01932 841020

F: 01932 843242